

LEGEND

	STD. KERB		EDGE OF SEAL TRANSITION TO EXISTING
	KERB & NIB		STREET LIGHTS
	MOUNTABLE KERB		DRIVEWAY
	CHANNEL		
	FOOTPATH		
	CHIPSEAL ONLY		

NOTES

- ALL COORDINATES ARE IN METRES AND IN TERMS OF GEODETIC 2000 MT. EDEN
- ALL LEVELS ARE IN METRES AND IN TERMS OF THE LANDS AND SURVEY DATUM (MEAN SEA LEVEL) AUCKLAND 1946

STREET LIGHT DETAILS

TYPE A - 7.5m VICPOLE 125mm SQUARE SERIES COLUMN HOT DIPPED GALV, TWO PACT BLACK PAINT FINISH. CREE EDGE SQUARE SERIES T3M 40 WATT LED TYPE 3M OPTICS

I, MICHAEL STEPHEN SMITH, MIPENZ CPENG HEREBY BELIEVE ON ALL REASONABLE GROUNDS THAT THE LOCATIONS OF KERBS, CHANNELS, STREET LIGHTS AND FOOTPATHS ARE ACCURATELY PLOTTED IN RELATION TO BOUNDARIES AND IS CORRECT AS THIS INFORMATION HAS BEEN PROVIDED BY THE CONTRACTOR OF THE WORKS - KERRY DINES LTD.

----- DATE
 MICHAEL STEPHEN SMITH
 MIPENZ CPENG

REV	REVISION DETAILS	BY	DATE

PLOTTED: DATE: 04-22
 RJP
 DRAWN: DATE: 04-22
 RJP
 APPROVED: DATE: 04-22
 MSS

THIS DRAWING AND DESIGN REMAINS THE PROPERTY OF, AND MAY NOT BE REPRODUCED OR ALTERED, WITHOUT THE WRITTEN PERMISSION OF CIVILPLAN CONSULTANTS LIMITED. NO LIABILITY SHALL BE ACCEPTED FOR UNAUTHORISED USE OF THIS DRAWING.

CIVILPLAN CONSULTANTS

Level 9, Laidlaw House, 20 Amersham Way, Manukau, Auckland. Phone: 09 222 2445

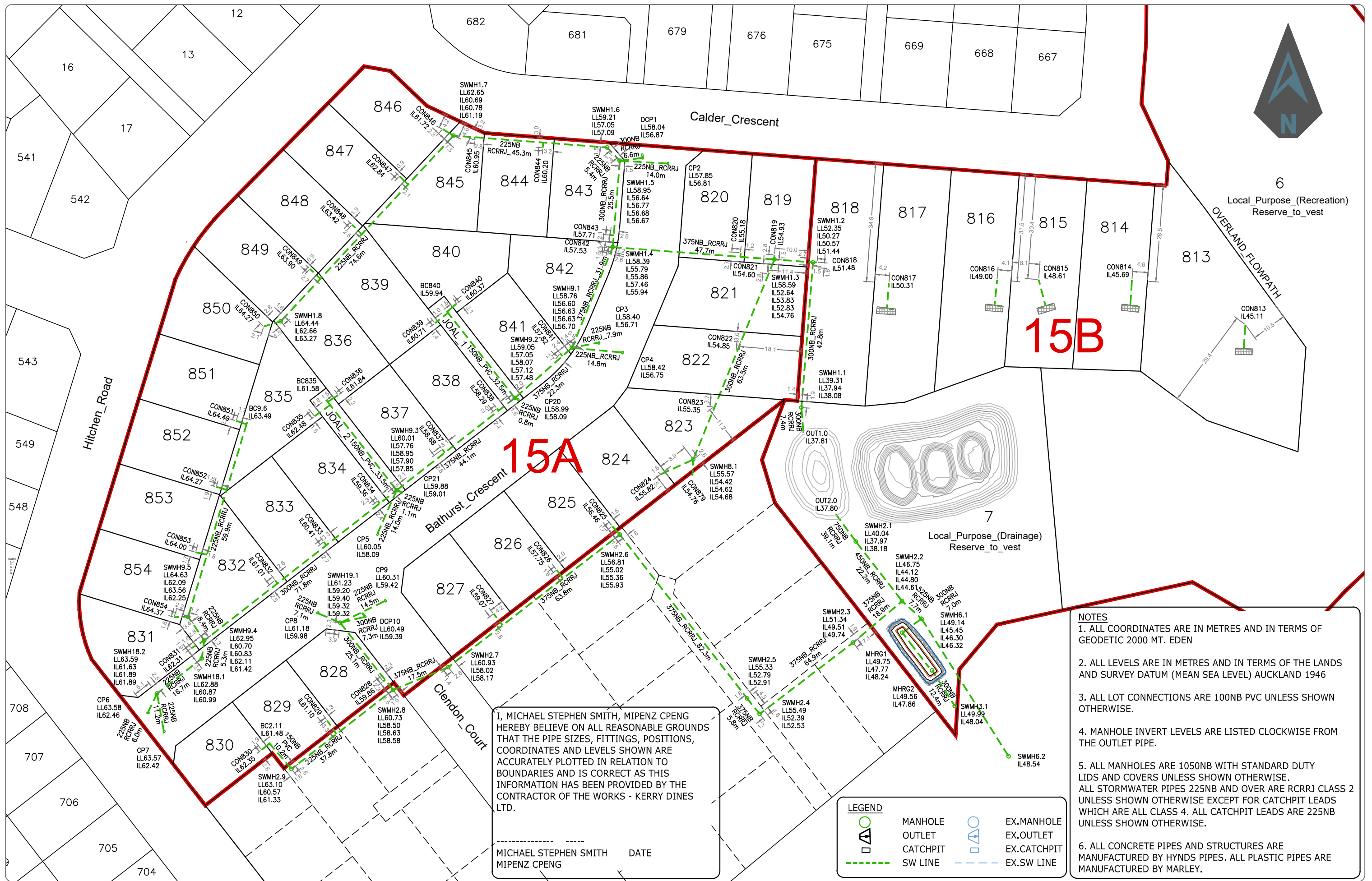
PROJECT TITLE:
 DFH JOINT VENTURE
 HITCHEN STAGE 15 SUBDIVISION
 POKENO

SHEET TITLE:
 AS BUILT
 ROADING

ISSUE STATUS: **AS BUILT**

SCALE: (A1/A3) 1:500 / 1:1000
 SCALE BAR 0 10 20 30 40 50m
 1:1000@A3
 DRAWING NUMBER: **126701-15-AB300** REV: **A**

Filepath: P:\APPDATA\LOCAL\AUTODESK\C3D 2020\ENU\TEMPLATE C:\DATA\POKENO\HITCHEN STAGE 15\AS BUILT\136701-15-AB300.DWG



15B

15A

- NOTES**
1. ALL COORDINATES ARE IN METRES AND IN TERMS OF GEODETIC 2000 MT. EDEN
 2. ALL LEVELS ARE IN METRES AND IN TERMS OF THE LANDS AND SURVEY DATUM (MEAN SEA LEVEL) AUCKLAND 1946
 3. ALL LOT CONNECTIONS ARE 100NB PVC UNLESS SHOWN OTHERWISE.
 4. MANHOLE INVERT LEVELS ARE LISTED CLOCKWISE FROM THE OUTLET PIPE.
 5. ALL MANHOLES ARE 1050NB WITH STANDARD DUTY LIDS AND COVERS UNLESS SHOWN OTHERWISE. ALL STORMWATER PIPES 225NB AND OVER ARE RCRRJ CLASS 2 UNLESS SHOWN OTHERWISE EXCEPT FOR CATCHPIT LEADS WHICH ARE ALL CLASS 4. ALL CATCHPIT LEADS ARE 225NB UNLESS SHOWN OTHERWISE.
 6. ALL CONCRETE PIPES AND STRUCTURES ARE MANUFACTURED BY HYNDS PIPES. ALL PLASTIC PIPES ARE MANUFACTURED BY MARLEY.

I, MICHAEL STEPHEN SMITH, MIPENZ CPENG HEREBY BELIEVE ON ALL REASONABLE GROUNDS THAT THE PIPE SIZES, FITTINGS, POSITIONS, COORDINATES AND LEVELS SHOWN ARE ACCURATELY PLOTTED IN RELATION TO BOUNDARIES AND IS CORRECT AS THIS INFORMATION HAS BEEN PROVIDED BY THE CONTRACTOR OF THE WORKS - KERRY DINES LTD.

MICHAEL STEPHEN SMITH DATE
MIPENZ CPENG

LEGEND

	MANHOLE		EX.MANHOLE
	OUTLET		EX.OUTLET
	CATCHPIT		EX.CATCHPIT
	SW LINE		EX.SW LINE

REV	REVISION DETAILS	BY	DATE

PLOTTED:	DATE:
RJP	04-22
DRAWN:	DATE:
RJP	04-22
APPROVED:	DATE:
MSS	04-22

THIS DRAWING AND DESIGN REMAINS THE PROPERTY OF, AND MAY NOT BE REPRODUCED OR ALTERED, WITHOUT THE WRITTEN PERMISSION OF CIVILPLAN CONSULTANTS LIMITED. NO LIABILITY SHALL BE ACCEPTED FOR UNAUTHORISED USE OF THIS DRAWING.

CIVILPLAN CONSULTANTS

Level 9, Laidlaw House, 20 Amersham Way, Manukau, Auckland. Phone: 09 222 2445

PROJECT TITLE:
**DFH JOINT VENTURE
HITCHEN STAGE 15 SUBDIVISION
POKENO**

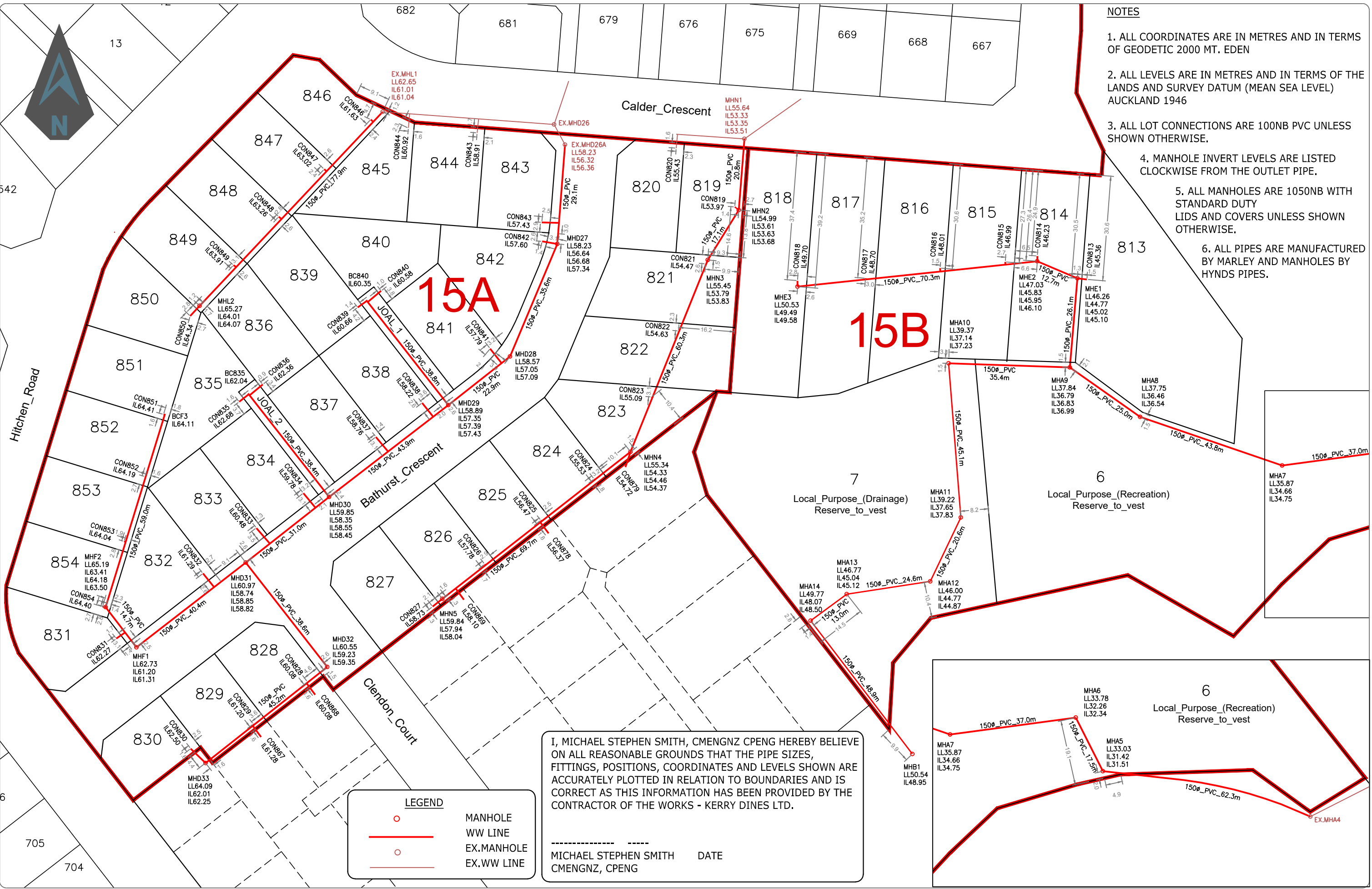
SHEET TITLE:
**AS BUILT
STORMWATER**

ISSUE STATUS: **AS BUILT**

SCALE: (A1/A3) **1:500 / 1:1000**

SCALE BAR 0 10 20 30 40 50m

DRAWING NUMBER: **126701-15-AB400** REV: **A**



- NOTES**
1. ALL COORDINATES ARE IN METRES AND IN TERMS OF GEODETIC 2000 MT. EDEN
 2. ALL LEVELS ARE IN METRES AND IN TERMS OF THE LANDS AND SURVEY DATUM (MEAN SEA LEVEL) AUCKLAND 1946
 3. ALL LOT CONNECTIONS ARE 100NB PVC UNLESS SHOWN OTHERWISE.
 4. MANHOLE INVERT LEVELS ARE LISTED CLOCKWISE FROM THE OUTLET PIPE.
 5. ALL MANHOLES ARE 1050NB WITH STANDARD DUTY LIDS AND COVERS UNLESS SHOWN OTHERWISE.
 6. ALL PIPES ARE MANUFACTURED BY MARLEY AND MANHOLES BY HYNDYS PIPES.

I, MICHAEL STEPHEN SMITH, CMENGNZ CPENG HEREBY BELIEVE ON ALL REASONABLE GROUNDS THAT THE PIPE SIZES, FITTINGS, POSITIONS, COORDINATES AND LEVELS SHOWN ARE ACCURATELY PLOTTED IN RELATION TO BOUNDARIES AND IS CORRECT AS THIS INFORMATION HAS BEEN PROVIDED BY THE CONTRACTOR OF THE WORKS - KERRY DINES LTD.

MICHAEL STEPHEN SMITH
CMENGNZ, CPENG

DATE

LEGEND

- MANHOLE
- WW LINE
- EX. MANHOLE
- EX. WW LINE

REV	REVISION DETAILS	BY	DATE

PLOTTED:	DATE:	04-22
RJP	DATE:	04-22
APPROVED:	DATE:	04-22
MSS		

THIS DRAWING AND DESIGN REMAINS THE PROPERTY OF, AND MAY NOT BE REPRODUCED OR ALTERED, WITHOUT THE WRITTEN PERMISSION OF CIVILPLAN CONSULTANTS LIMITED. NO LIABILITY SHALL BE ACCEPTED FOR UNAUTHORIZED USE OF THIS DRAWING.

CIVILPLAN CONSULTANTS

Level 9, Laidlaw House, 20 Amersham Way, Manukau, Auckland. Phone: 09 222 2445

PROJECT TITLE:
**DFH JOINT VENTURE
HITCHEN STAGE 15 SUBDIVISION
POKENO**

SHEET TITLE:
**AS BUILT
WASTE WATER DRAINAGE**

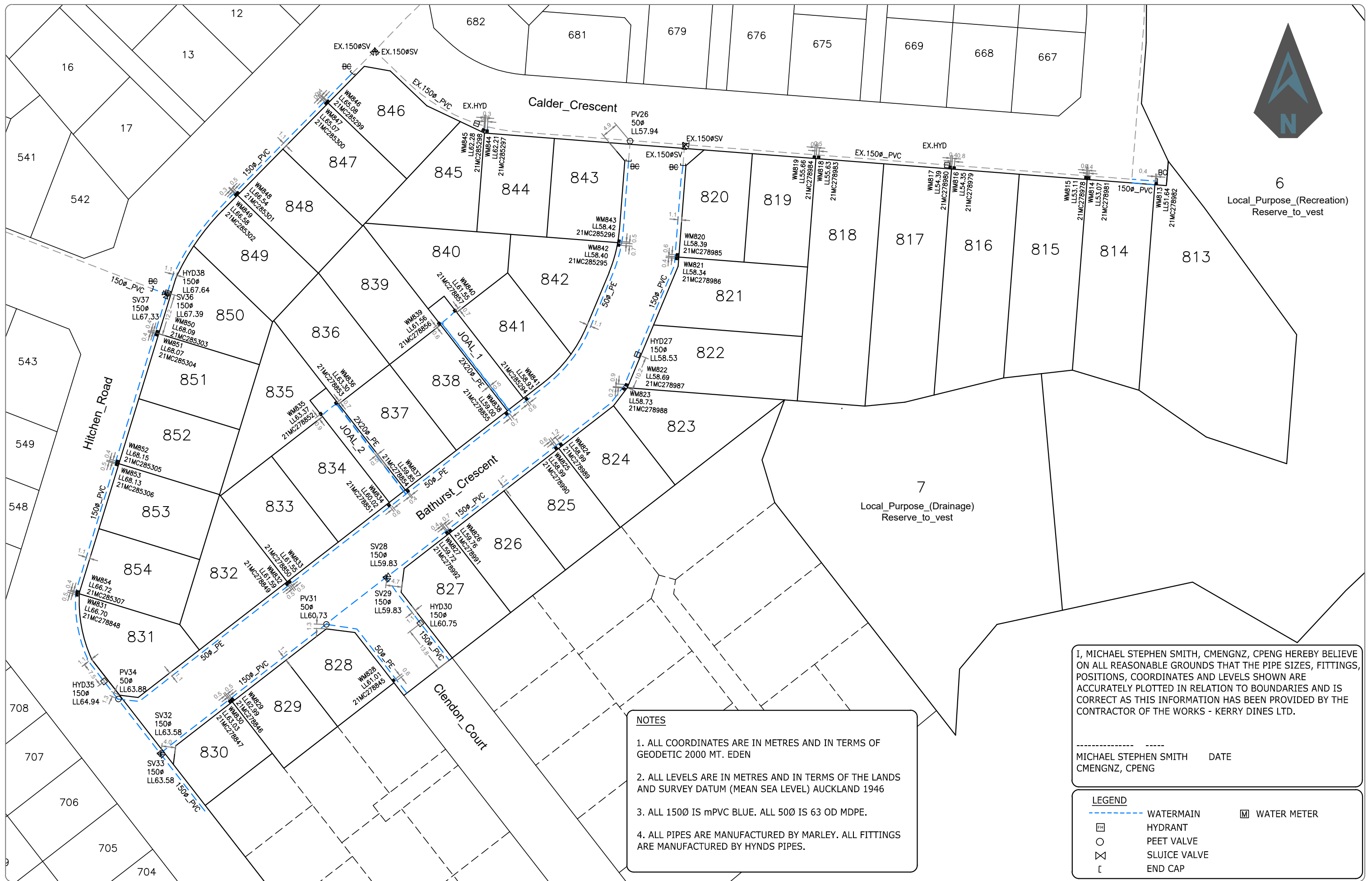
ISSUE STATUS: **AS BUILT**

SCALE: (A1/A3) **1:500 / 1:1000**

SCALE BAR 0 10 20 30 40 50m

DRAWING NUMBER: **126701-15-AB401** REV: **A**

Filepath: P:\APPDATA\LOCAL\AUTODESK\C3D 2020\ENU\TEMPLATE C:\DATA\POKENO\HITCHEN STAGE 15\AS BUILT\126701-15-AB401.DWG



I, MICHAEL STEPHEN SMITH, CMENGNZ, CPENG HEREBY BELIEVE ON ALL REASONABLE GROUNDS THAT THE PIPE SIZES, FITTINGS, POSITIONS, COORDINATES AND LEVELS SHOWN ARE ACCURATELY PLOTTED IN RELATION TO BOUNDARIES AND IS CORRECT AS THIS INFORMATION HAS BEEN PROVIDED BY THE CONTRACTOR OF THE WORKS - KERRY DINES LTD.

 MICHAEL STEPHEN SMITH DATE
 CMENGNZ, CPENG

- NOTES**
1. ALL COORDINATES ARE IN METRES AND IN TERMS OF GEODETIC 2000 MT. EDEN
 2. ALL LEVELS ARE IN METRES AND IN TERMS OF THE LANDS AND SURVEY DATUM (MEAN SEA LEVEL) AUCKLAND 1946
 3. ALL 150Ø IS mPVC BLUE. ALL 50Ø IS 63 OD MDPE.
 4. ALL PIPES ARE MANUFACTURED BY MARLEY. ALL FITTINGS ARE MANUFACTURED BY HYNDS PIPES.

LEGEND

	WATERMAIN		WATER METER
	HYDRANT		
	PEET VALVE		
	SLUICE VALVE		
	END CAP		

REV	REVISION DETAILS	BY	DATE

PLOTTED: RJP DATE: 04-22 DRAWN: RJP DATE: 04-22 APPROVED: MSS DATE: 04-22	THIS DRAWING AND DESIGN REMAINS THE PROPERTY OF, AND MAY NOT BE REPRODUCED OR ALTERED, WITHOUT THE WRITTEN PERMISSION OF CIVILPLAN CONSULTANTS LIMITED. NO LIABILITY SHALL BE ACCEPTED FOR UNAUTHORISED USE OF THIS DRAWING.
--	--

Level 9, Laidlaw House, 20 Amersham Way, Manukau, Auckland. Phone: 09 222 2445

PROJECT TITLE:
**DFH JOINT VENTURE
 HITCHEN STAGE 15 SUBDIVISION
 POKENO**

SHEET TITLE:
**AS BUILT
 WATER RETICULATION**

ISSUE STATUS: **AS BUILT**

SCALE: (A1/A3) **1:500 / 1:1000**

SCALE BAR: 0 10 20 30 40 50m

DRAWING NUMBER: **126701-15-AB500** REV: **A**